



U.S. ARMY



## Team Redstone Update to Military Officers Association of America (MOAA)

30 May 2018



COL Thomas Holliday, Jr.  
Garrison Commander  
Redstone Arsenal, Alabama



# Discussion Topics

- **Redstone Arsenal Over Time**
- **Redstone Arsenal Economic Impact**
- **Gate 9 Expansion**
- **Resolute Way & Exploration Park**



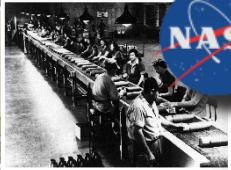


# Redstone Arsenal Over Time

## A Vital Strategic Asset for Our Nation ...



MAJ Carroll D. Hudson broke ground for the Redstone Ordnance Plant (renamed Redstone Arsenal in 1943) on October 25, 1941





# Redstone Arsenal Economic Impact

Tennessee is a Key Partner ...

## ~\$18B

Total Annual Economic Impact

- ✓ Equivalent to 8.5% of Alabama State GDP

## ~\$467M

Total State and Local Tax Revenue

- ✓ Personal and Corporate Taxes
- ✓ Highest Ratio of Engineers per Capita
- ✓ Top 5 for Electronics, Computer Hardware and Materials Engineers
- ✓ Top 5 for Software Developers

Redstone Arsenal Today

40,500+  
Total Employees

17,500  
Civilians  
(43%)

800  
Military  
(2%)

22,200  
Contractors  
(55%)

Major Career Fields Supporting Redstone

- ✓ Science and Engineering
- ✓ Logistics Management
- ✓ Acquisition & Contracting



## ~104,500

Total Jobs Across Tennessee Valley

- ✓ 40K Direct Jobs on RSA
- ✓ 66.5K Indirect & Induced Jobs Across Region
- ✓ Over 1,200 RSA Employees live in Tennessee
- ✓ Approximately 500 live in Fayetteville

Total Annual Salaries

Approx. \$3.3



Average Salary

Approx. \$87



RSA Contracts to AL

Approx. \$5.9





# Gate 9 Expansion



- Gate 9 expansion contract awarded by the Federal Building Authority on 25 Apr 18
- Scope of project includes construction of 2 additional inspection point lanes 7 & 8 and an additional lane beyond the gate to Homestead Road
- Gate 9 goes from 6 to 8 lanes; representing a 33% increase
- Target for completion of additional inspection lanes: September 18

May 2018  
Concrete Work  
& Utilities  
Installed

Jun 2018  
Initial pavement  
placed on additional  
southbound lane

Jul 2018  
Roof System  
Installation

Aug 18  
Guard Booths &  
Lights Installed

Sep 2018  
Barrier System  
Upgrade

OCT 2018  
Gate #9 Lane 7 & 8  
Operational

## Construction Timeline

Jun 2018  
Structural steel  
erected

Aug 2018  
Architectural panels  
Installed

Sep 2018  
Final Paving  
Completed

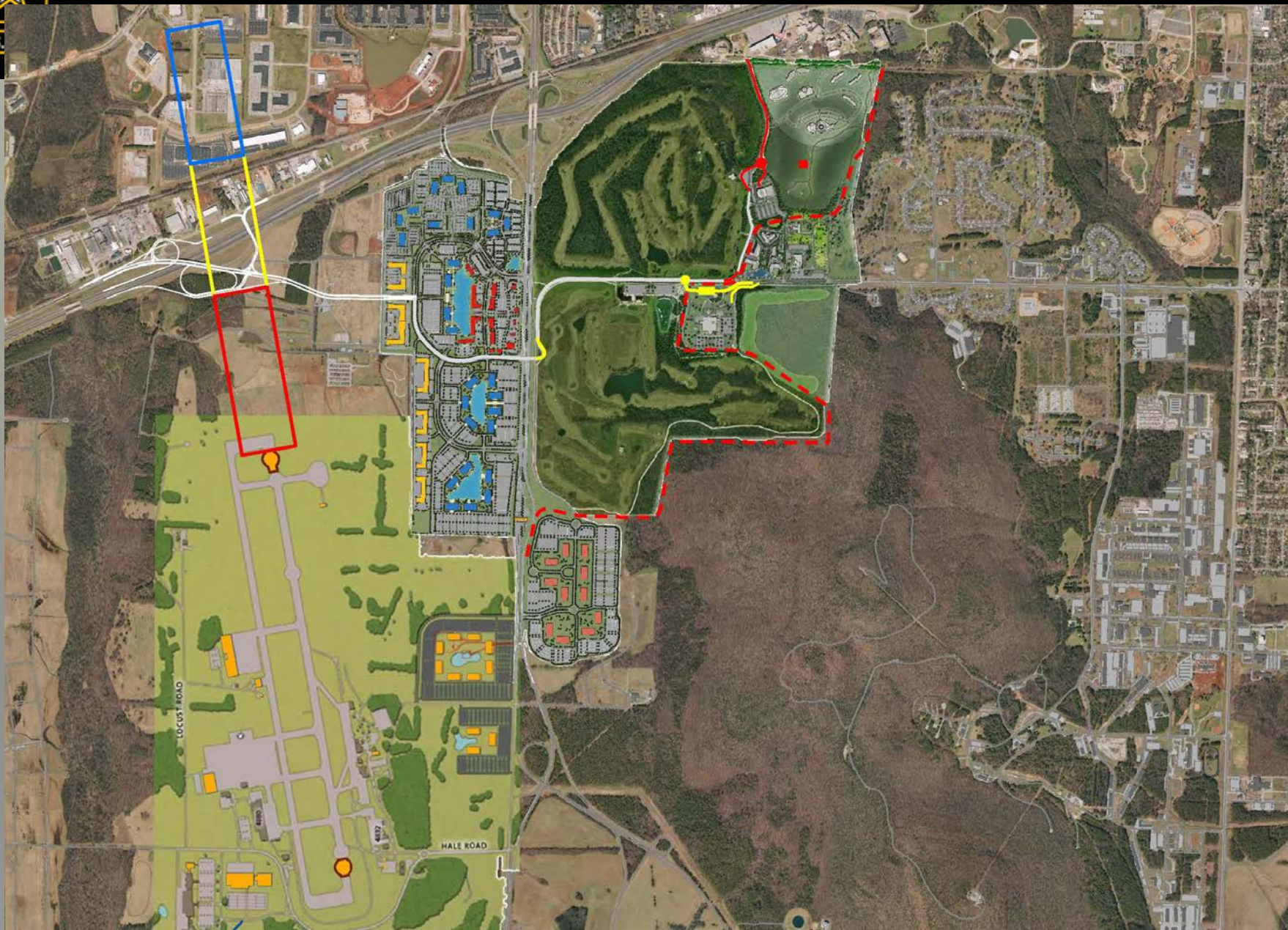
Inspection Lanes  
7 & 8  
Completed



# Resolute Way & Exploration Park



U.S.



TEAM ONE



# Team Redstone

## Discussion





# Team Redstone

## Backup Slides







U.S. ARMY

# 2017 RSA 1-n MCA Project Status

Rank	P/N	MCA Project Description	Org	\$ Value	Status
1	71154	Airfield Control Tower	IMCOM	\$8.3M	FYDP FY23
2	76673	Aviation Test Instrumentation and Integration Facility	A TEC	\$36M	FYDP FY20
3	65881	RTS Guided Missile Facility (ROC-H/DOCC)	SMDC	\$9M	FY24 SMDC #2 MCA Project
4	58192	Military Systems Electromagnetic Test Support Facility	A TEC	\$21M	FYDP FY22
5	58199	Propulsion & Structure RDT&E Revitalization Project	RDECOM	\$26M	FYDP FY22
6	73982	USAESC Huntsville Operations Center	CEHC	\$94M	
7	74708	AMRDEC Operation Center	RDECOM	\$73M	
8	77155	Defense Access Roads	SDDC	\$12.8M	<b>(COH)</b>
	51061	Lower Tier Project Office	PEO MS	\$59M	FY24 ASAALT #1 MCA Project
	85381	National Guard Readiness Center	ALARNG	\$17M	FYDP FY22

- Projects in Green are currently on the Future Years Development Program (FYDP)
- Projects in Orange are currently competing for placement on the FY24 FYDP by the Army

\* Per OACSIM FY19-23 Published 1-n FYDP List as of Apr 2018 (*Pre-decisional*)





U.S. ARMY

# 2018 RSA 1-n MCA Projects

Program Type	Rank	Project Number	Description	Org	Programmed Amount
MCA		51061	ASA(ALT) Campus (A)	PEO M&S	\$59M
MCA		93059	ASA(ALT) Campus (B)	PEO Avn, IEW&S, Soldier	\$65M
MCA		93062	ASA(ALT) Campus (C)	PEO Avn	\$83M
MCA		93324	ASA(ALT) Campus (D)	PEO M&S	\$82M
MCA		74708	AMRDEC Engineering Services Facility	RDECOM	\$55M
MCA		65881	RTS Guided Missile Facility (ROC-H/DOCC)	SMDC	\$9.3M
MCA		73982	CEHNC Engineering Center	USACE	\$94M





# UNMET Space Requirements

ORGANIZATION	LEASES		UNMET SPACE REQUESTS	
	PEOPLE	SF	PEOPLE	SF
AMRDEC-SED	235	43,400	-	-
ATF	-	-	109	18,842
Defense Contract Management Agency	-	-	175	26,837
PEO IEW&S	239	38,643	75	19,750
Missile Defense Agency	225	98,080	167	35,000
PEO Aviation	386	78,818	-	-
PEO M&S	647	191,389	739	137,858
PEO Soldier	55	16,353	-	-
SMDC	128	59,635	-	-
USASAC AACoE	15	10,905	-	-
USACE-HNC	1,059	185,374	-	-
<b>Totals</b>	<b>2,989</b>	<b>722,597</b>	<b>1,265</b>	<b>238,287</b>
<b>GRAND TOTALS</b>			<b>4,254</b>	<b>960,884</b>

- **Reduce the Footprint**, HQDA EXORD 164-15, March 2015
- **Stand Alone Facilities**, HQDA EXORD 281-16, September 2016
- IMCOM ePRISMS Facility Survey, Summer/Fall 2017
- **Over \$15M Annual Lease Cost**

